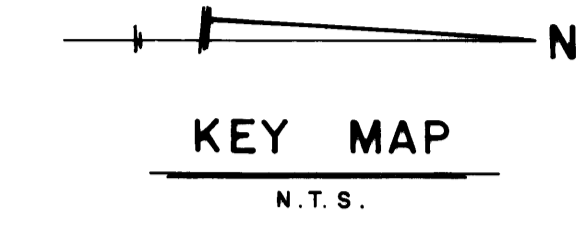
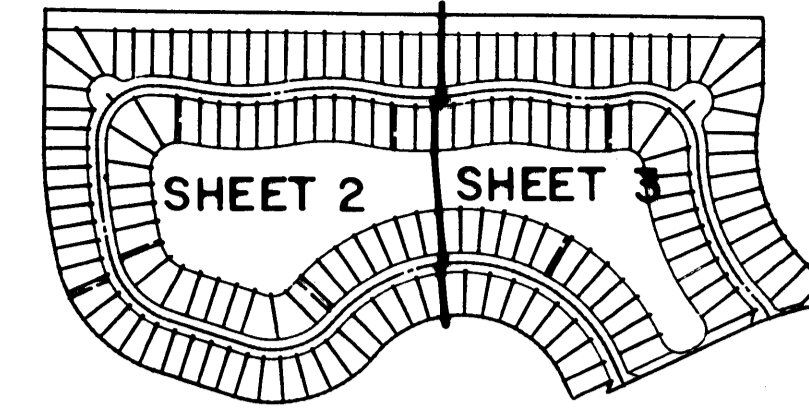
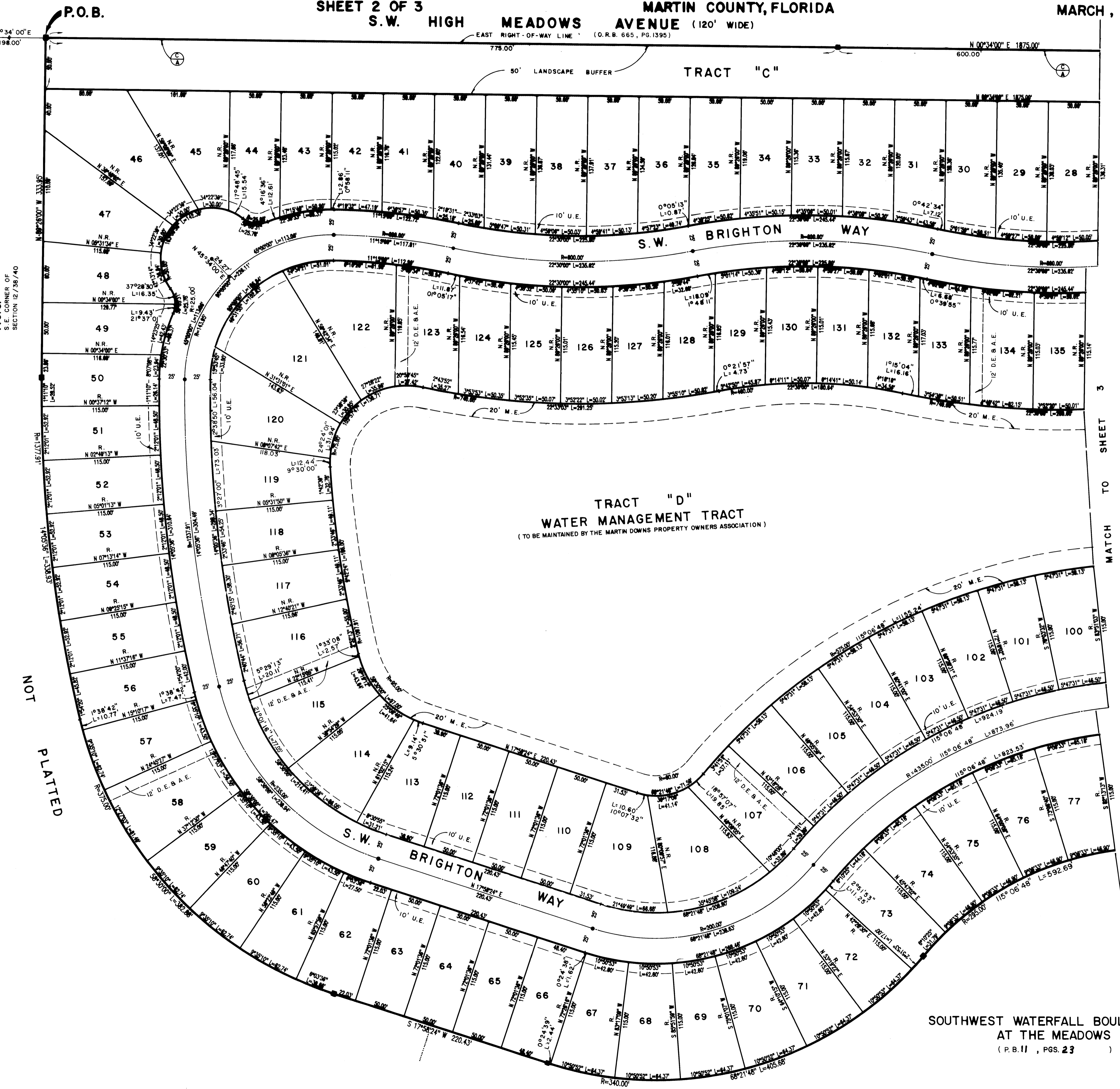


A PLAT OF PARCEL 51 AT THE MEADOWS

BEING PLAT NO. 42 OF MARTIN DOWNS A P.U.D. LYING IN SECTION 12, TOWNSHIP 38 SOUTH, RANGE 40 EAST,
SHEET 2 OF 3
S.W. HIGH MEADOWS AVENUE (120' WIDE) MARTIN COUNTY, FLORIDA MARCH, 1988



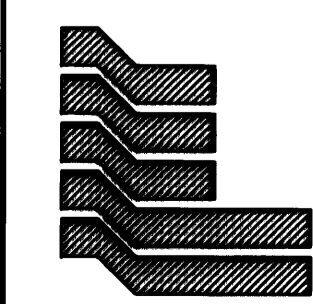
I, MARSHA STILLER, CLERK OF THE CIRCUIT COURT OF MARTIN COUNTY, FLORIDA, HEREBY CERTIFY THAT THIS PLAT WAS FILED FOR RECORD IN PLAT BOOK 11, PAGE 30, MARTIN COUNTY, FLORIDA, PUBLIC RECORDS, THIS DAY OF _____ A.D. 19____.
MARSHA STILLER, CLERK OF CIRCUIT COURT MARTIN COUNTY, FLORIDA
By: _____ DEPUTY CLERK
FILE NO. _____



NOT PLATTED

MATCH TO SHEET 3

SOUTHWEST WATERFALL BOULEVARD AT THE MEADOWS
(P.B. 11, PGS. 23)



Landmark Surveying & Mapping Inc.
1850 FOREST HILL BOULEVARD
PH. (305)433-5405 SUITE 100 W.P.B. FLORIDA

PARCEL 51 AT THE MEADOWS